

Analytical Schemes for Drug Chemistry Analysis

The following analytical schemes shall be used for the analysis of suspected controlled substances in the Drug Chemistry Section of the North Carolina State Crime Laboratory. More information regarding the analytical schemes can be found in the Drug Chemistry Section [Technical Procedure for Drug Chemistry Analysis](#).

To use the analytical schemes:

Step 1: Perform a physical examination of the material to determine which analytical scheme shall be utilized.

Step 2: Consult the Drug Chemistry Section [Administrative Procedure for Sampling](#) to determine if sampling applies to the population being analyzed.

Step 3: Obtain weight(s) in accordance with the Drug Chemistry Section [Technical Procedure for Drug Chemistry Analysis](#) and the Drug Chemistry Section [Administrative Procedure for Sampling](#).

Step 4: Obtain a portion of the material to be analyzed.

Step 5: Follow the steps of the analytical scheme, which was determined in step 1.

Step 6: See the Drug Chemistry Section [Technical Procedure for Drug Chemistry Analysis](#) for reporting.

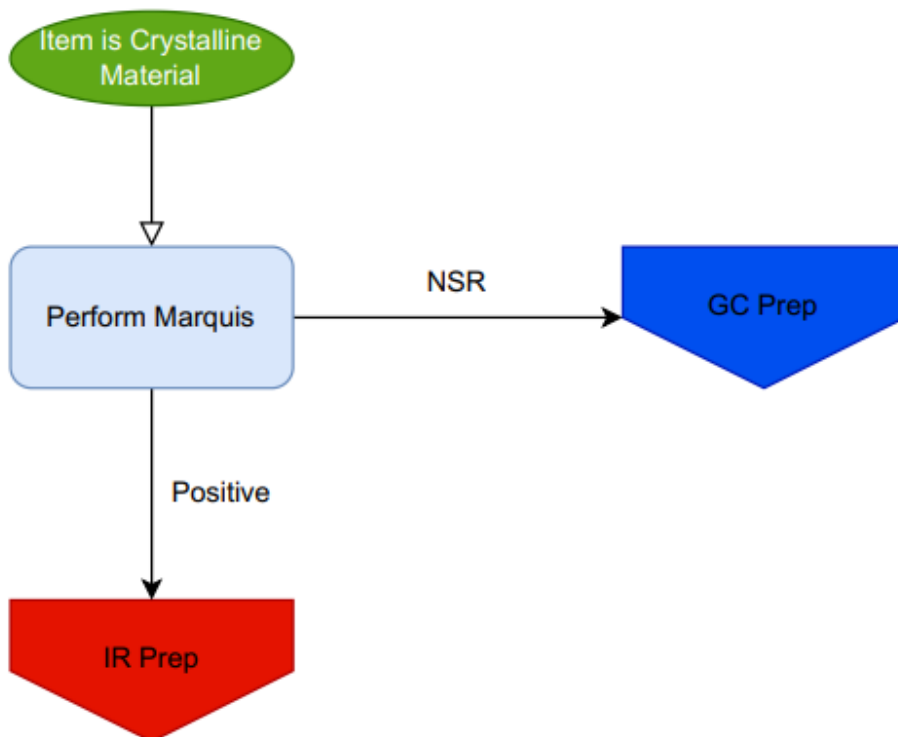
*It should be noted that sample size or other circumstances may require a rearrangement or modification of one or more steps. Justification for such rearrangements or modifications shall be noted in the casefile.

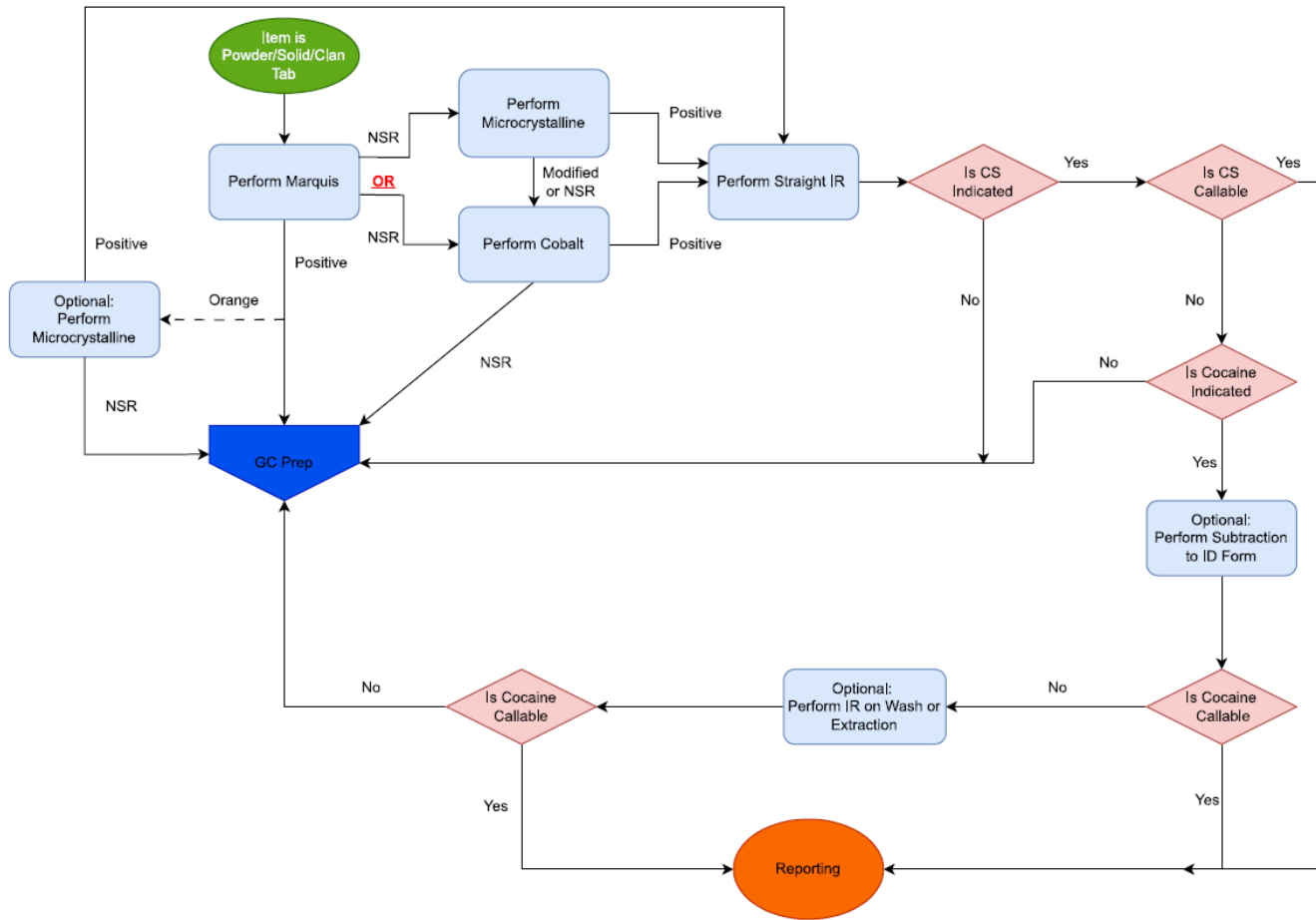
**A wash or extraction may be utilized for sample preparation during any step of the chemical analysis.

***Where applicable, precursor(s) are considered controlled substances for the purposes of the analytical schemes.

Approved for Use By:

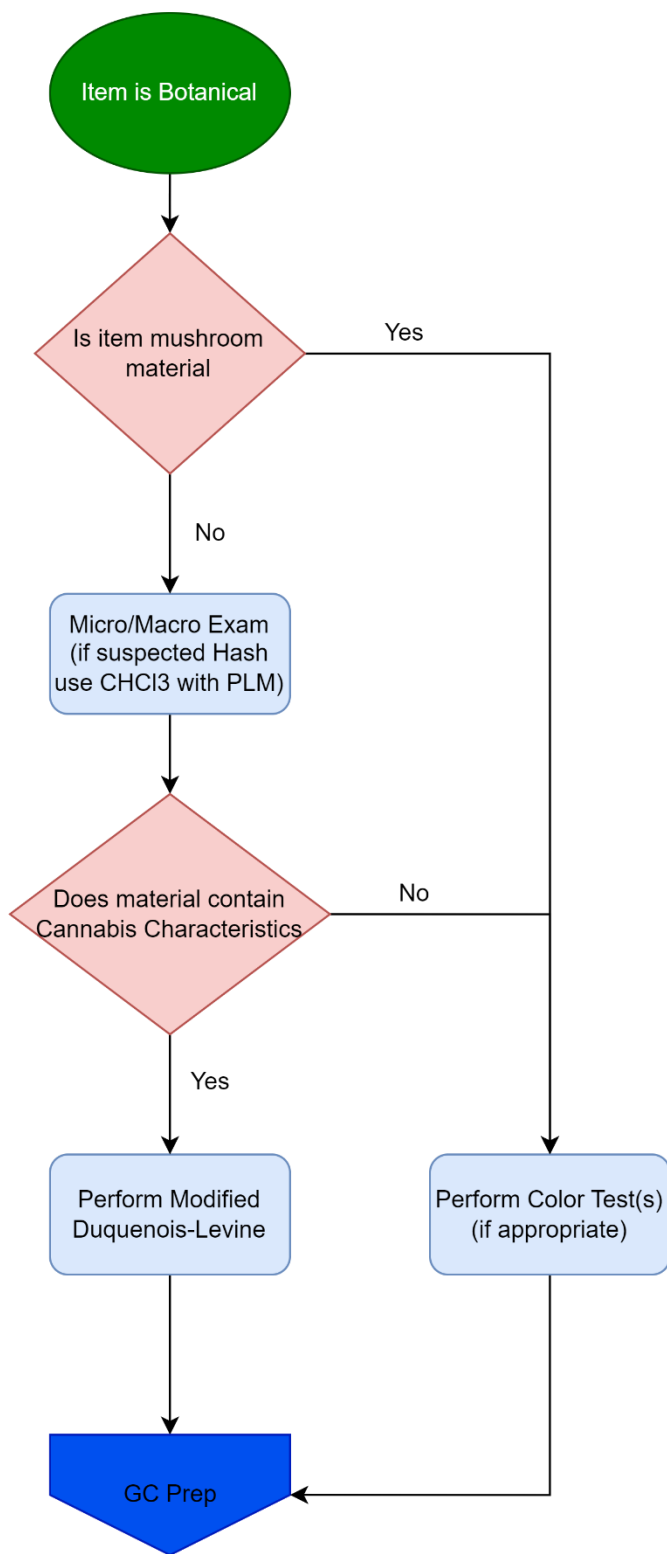
Allison Dalassie



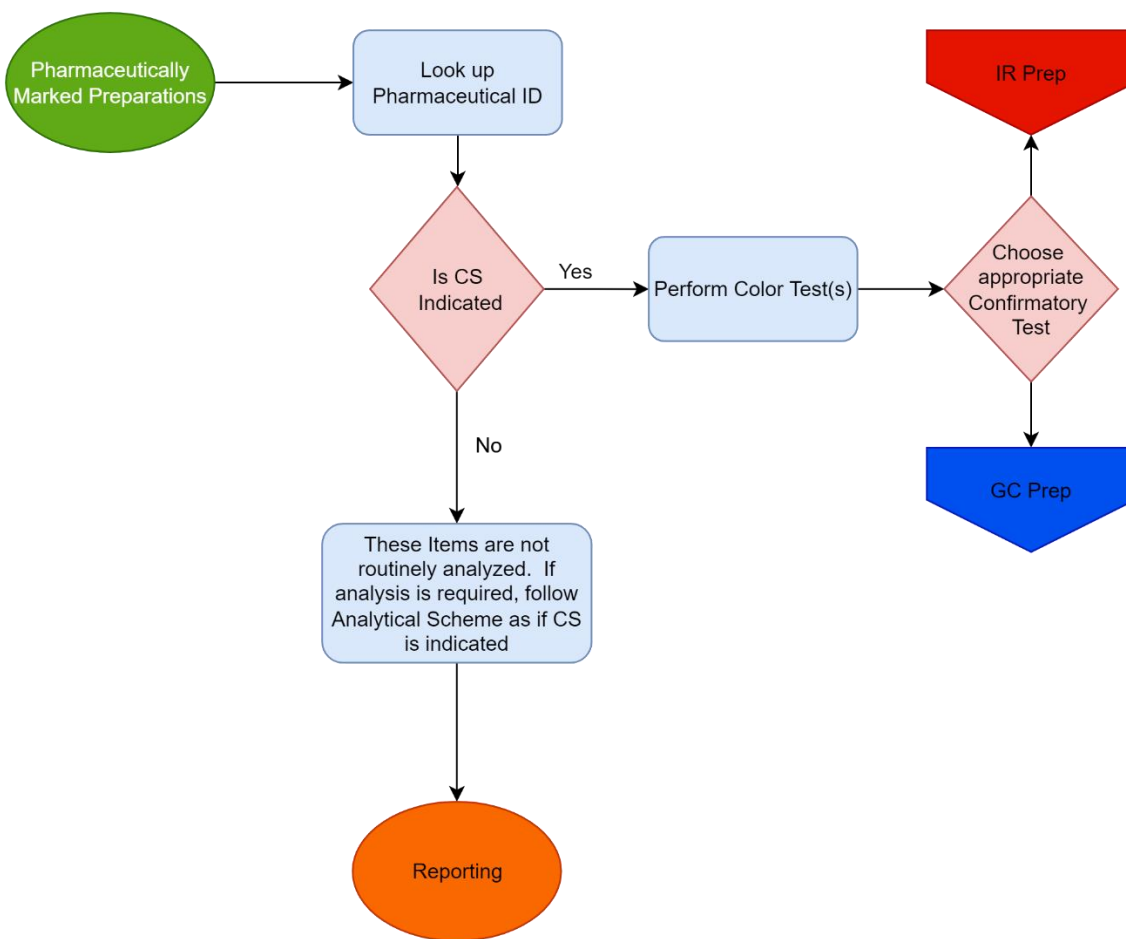


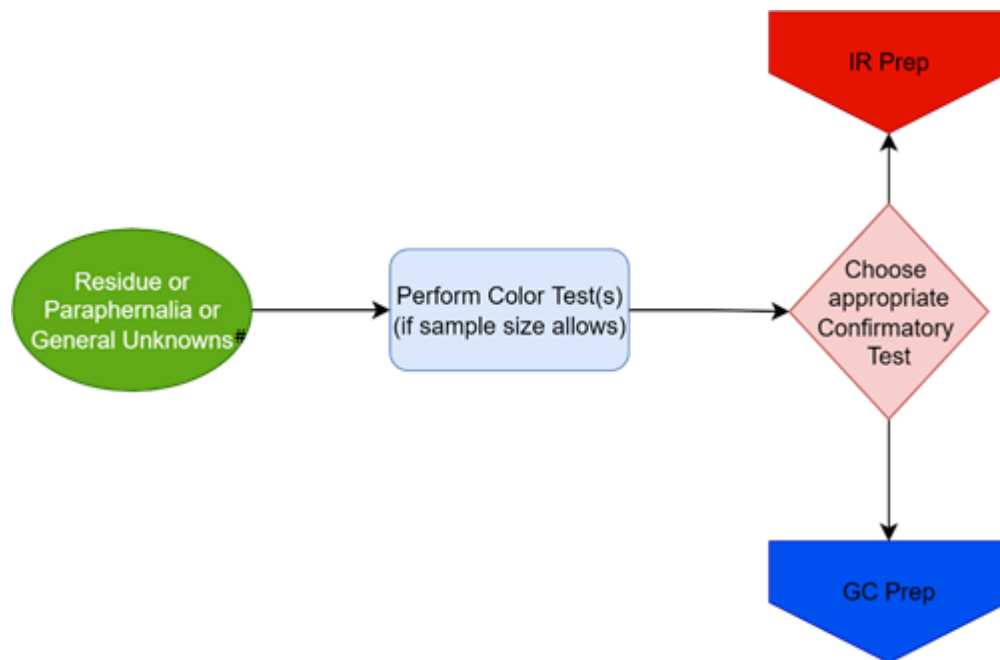
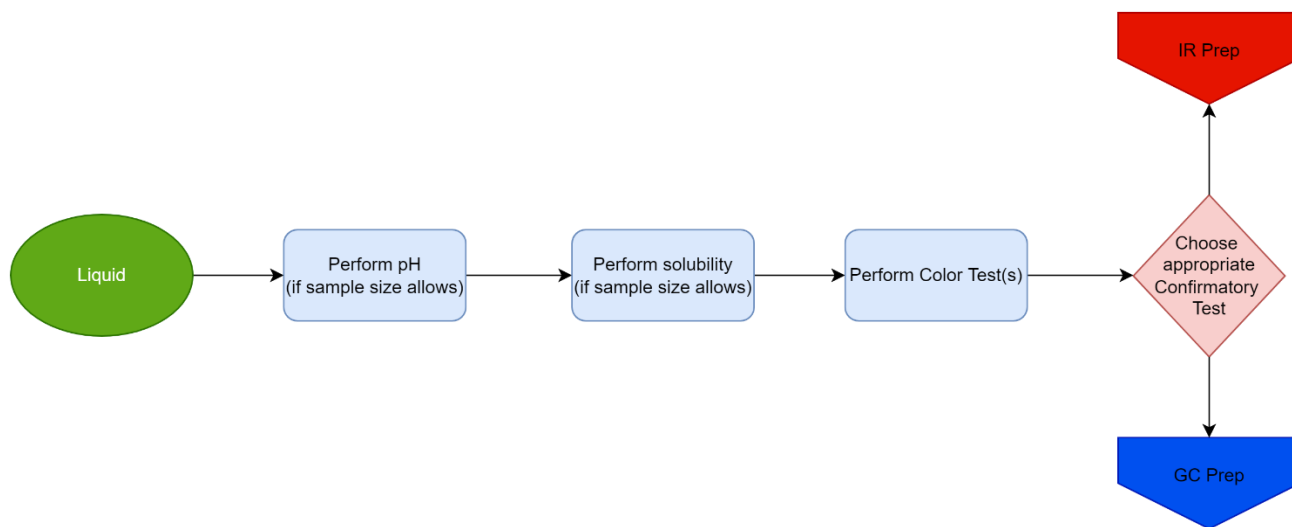
If a mixture of Cocaine HCl and Cocaine Base is present, additional steps may be required

Approved for Use By:
Allison Salasie



Approved for Use By:
Allison Salasie

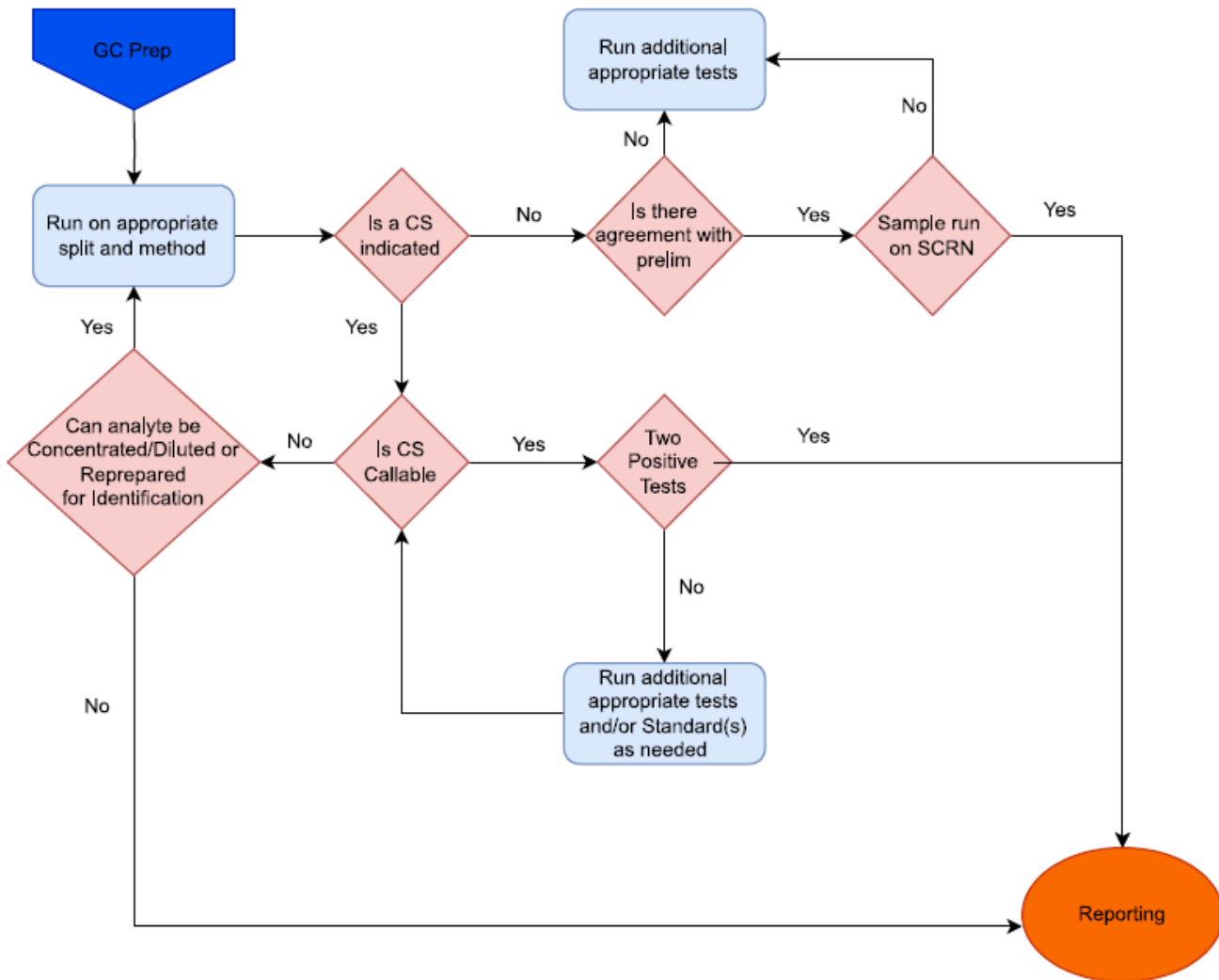




#The “General Unknowns” scheme shall be followed when material does not fit into another scheme.

Approved for Use By:
Allison Dalassie

The following shall be utilized where “GC Prep” is indicated:



Approved for Use By:
Allison Dalassie

The following shall be utilized where “IR Prep” is indicated:

